

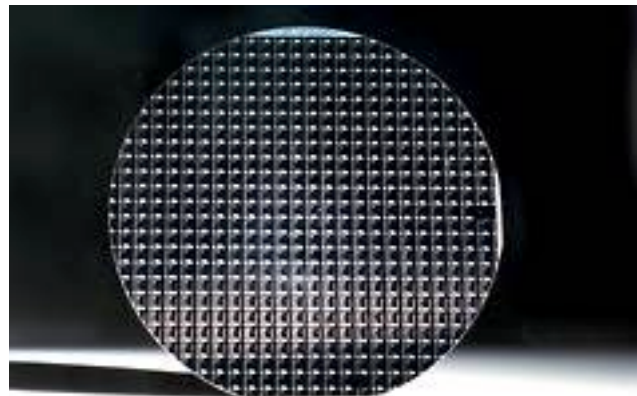
PTC-Thinfilm Chip Resistors

Type: **TRS-C, TRS-S**

Sizes: **RR0805, RR1206**

Features:

- PTC-Chip Resistors in Thinfilm
- Contact areas tinned - resistant to leaching
- Resistance element resin-passivated
- Tolerances down to 0.1% - TC available from +3300 to +3850
- Linearity of TCR better than $\pm 5\%$



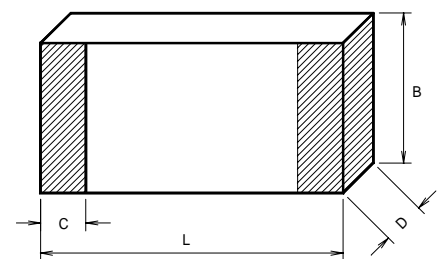
Dimensions TRS-C:

| Baugröße | metrisch | L | B | D | C |
|----------|----------|---------------|----------------|----------------|---------------|
| RR0805 | RR2012M | 2,0 \pm 0,1 | 1,25 \pm 0,1 | 0,55 \pm 0,1 | 0,4 \pm 0,2 |
| RR1206 | RR3216M | 3,2 \pm 0,2 | 1,6 \pm 0,15 | 0,55 \pm 0,1 | 0,5 \pm 0,2 |

(L=Länge, B=Breite, D=Dicke, C=Breite Umkontakt in mm)

Dimensions TRS-S:

| Size | Contact system |
|-----------------------------|----------------|
| 0,5 x 0,5 mm ² | solderable |
| 0,76 x 0,76 mm ² | bondable |
| 2 x 1 mm ² | |





Ordering data (example):

Example: TRS-C 1206 - 10K \pm 0,5% - TK 3850 \pm 200 - bulk Packaging (if not bulk)

Type Value Tolerance TCR Tolerance TCR

Technische Daten-baugrößenabhängig:

| Size | TRS-C 0805 | TRS-C 1206 | TRS-S |
|--|------------|------------|-----------------------|
| Power rating P ₇₀ (mW) (P ₁₂₅ = 0 mW) | 62,5 | 125 | 25 mW/mm ² |

| Range/TC/Tolerance | | TRS-C 0805 | TRS-C 1206 | TRS-S |
|-------------------------------------|---------------------------|----------------------|----------------------|----------------------|
| 100 Ω 1, 5, 10 k Ω | TC (ppm/K): | +3300, +3850 | +3300, +3850 | +3300, +3850 |
| | TC-tolerances (ppm/K): | \pm 500, \pm 200 | \pm 500, \pm 200 | \pm 500, \pm 200 |
| | Value tolerances at 25°C: | \pm 0,5/1/5 % | \pm 0,5/1/5 % | \pm 0,25/0,5/1/5 % |
| 100 k Ω | TCe (ppm/K): | | +3300, +3850 | +3300, +3850 |
| | TC-tolerances (ppm/K): | | \pm 500, \pm 200 | \pm 500, \pm 200 |
| | Value tolerances at 25°C: | | \pm 0,5/1/5 % | \pm 0,25/0,5/1/5 % |

Andere Parameter auf Anfrage.

Technical data - general:

| | TRS-C | TRS-S |
|--|----------------|--|
| Temperature range | -55°C...+125°C | -55°C...+125°C |
| Climatic category to DIN IEC 68 | 55/155/56 | Structural elements are to be protected from environmental influences. |
| Solderability ¹⁾ | 235 °C, 2s | |
| Max. soldering temperature ²⁾ | 260 °C, 10s | |

| Long term stability | TRS-C | TRS-S |
|--------------------------|----------|----------|
| Storage 125 °C/1000h | < 0,35 % | < 0,25 % |
| Storage 155 °C/1000h | < 0,5 % | < 0,25 % |
| Load P70/70°C/1000h | < 0,5 % | < 0,25 % |
| Damp heat (56d/40°C/96%) | < 0,75 % | |

Data not specified: CECC 40401-801

1) DIN IEC 68 T2-20, Ta Meth. 1

2) DIN IEC 68 T2-20, Ta Meth. 1A



BREL Precision Components, Inc.
1621 West University Parkway
Sarasota, FL 34243

Phone: 941-355-9791
Sales: 800-237-4564
Fax: 941-355-1530
E-Mail: sales@brelintl.com
Website: www.brelintl.com
Issue: April-2001



Packaging:

TRS-C: Bulk or Tape/Reel to DIN IEC 60286-3

(tape width: 8 mm, reel diameter: 180 mm)

Minimum quantity: bulk - 100 pieces per value; tape - 2000 pieces per value

TRS-S: Chip Trays, Wafer inked, Wafer foil/inked

Stand: 02/99



BREL Precision Components, Inc.
1621 West University Parkway
Sarasota, FL 34243

Phone 941-355-9791
Sales: 800-237-4564
Fax: 941-355-1530
E-Mail: sales@brelintl.com
Website: www.brelintl.com
Issue: April-2001