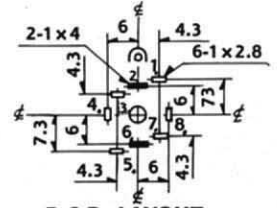
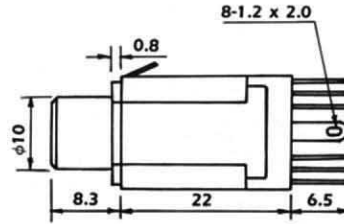
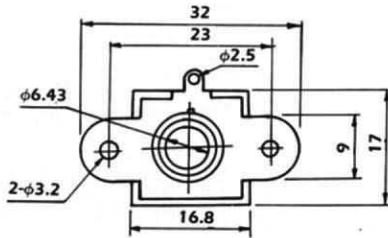


6.4φ HEADPHONE JACK

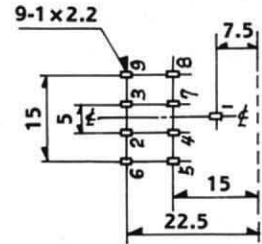
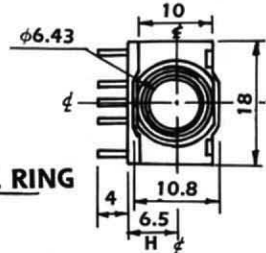
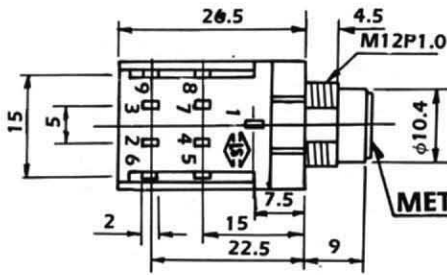
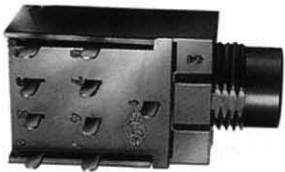
LH-0648



**P.C.B. LAYOUT
(BOTTOM VIEW)**

0642-3RT	0642-3TS	0643-4R	0644	0646	0648

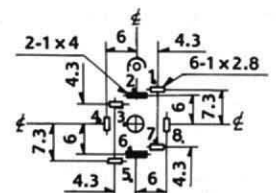
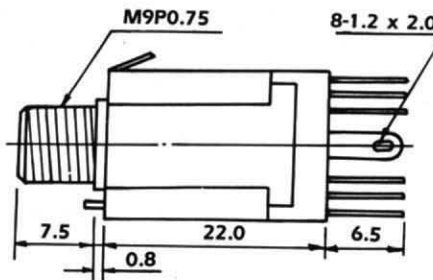
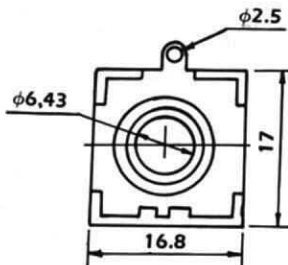
LH-0688 W/METAL RING



**P.C.B. LAYOUT
(BOTTOM VIEW)**

0682-3RT	0684	0686	0688

LH-0638

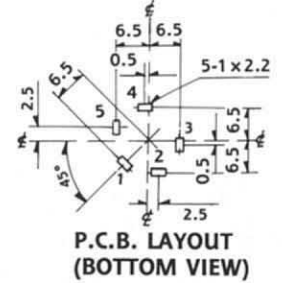
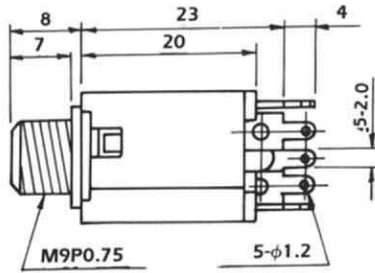
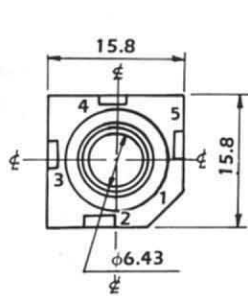


**P.C.B. LAYOUT
(BOTTOM VIEW)**

0632-3RT	0632-3TS	0633-4R	0634	0636	0638

6.4φ HEADPHONE JACK

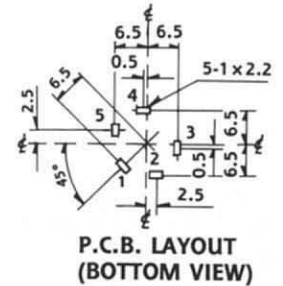
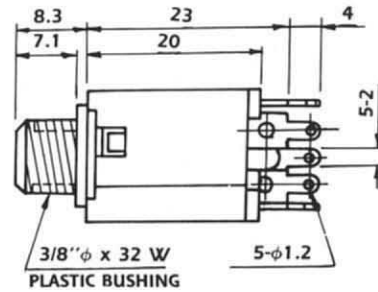
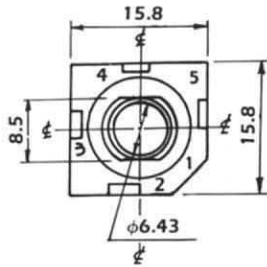
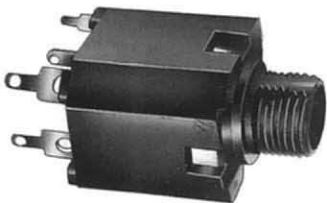
LJ-0695 (9.0)



-2T	-3RT	-3TS	-4R	-5	-4TM	-4TC

LJ-0695A (9.5) PLASTIC BUSHING

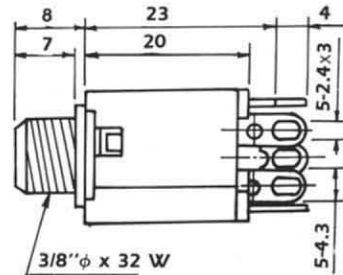
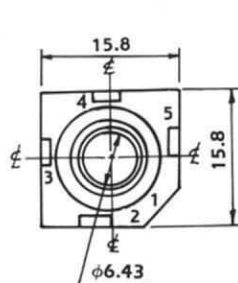
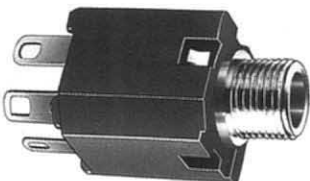
LJ-0695F (9.5) METAL BUSHING



-2T	-3RT	-3TS	-4R	-5	-4TM	-4TC

LJ-0696F (9.5) METAL BUSHING

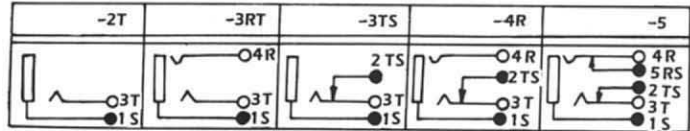
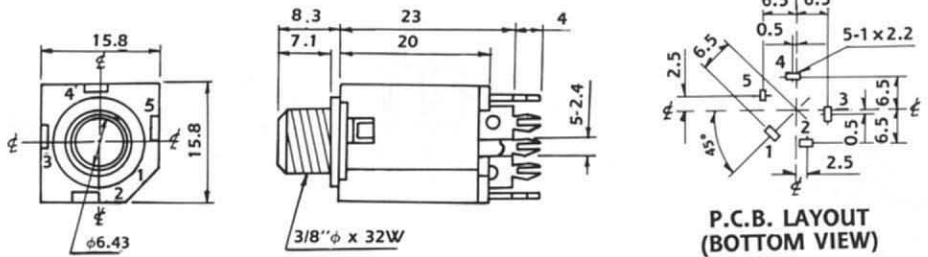
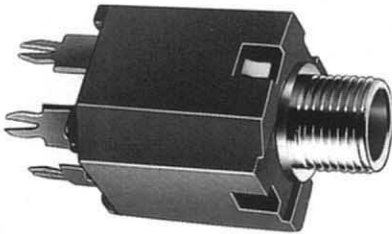
LJ-0696A (9.5) PLASTIC BUSHING



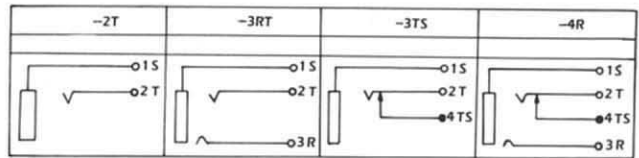
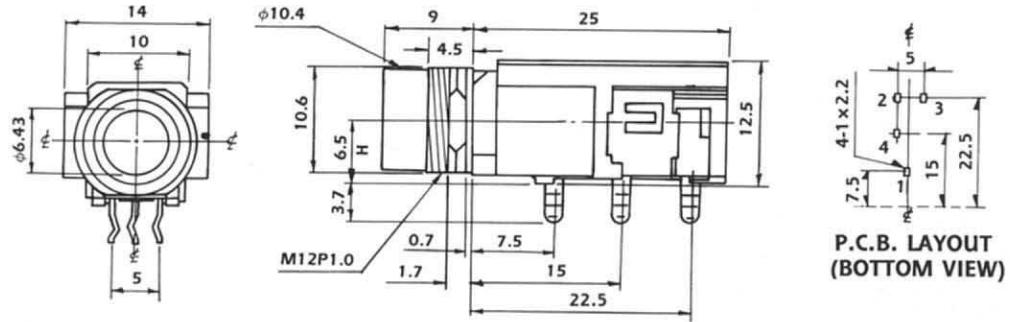
-2T	-3RT	-3TS	-4R	-5

6.4φ HEADPHONE JACK

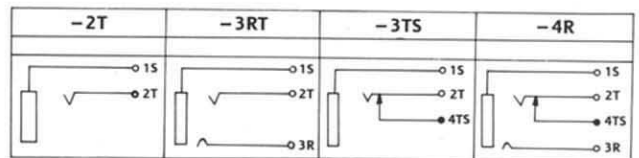
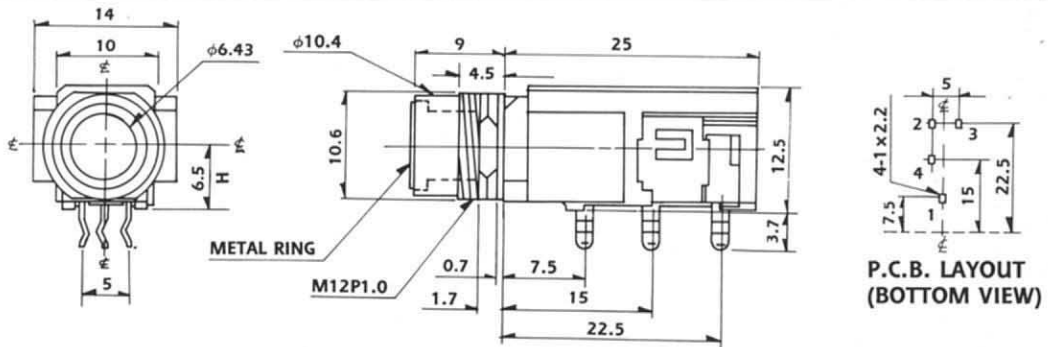
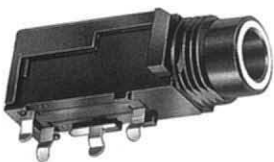
LJ-0697F (9.5) METAL BUSHING
 LJ-0697A (9.5) PLASTIC BUSHING



LJB0660
 W/O METAL RING

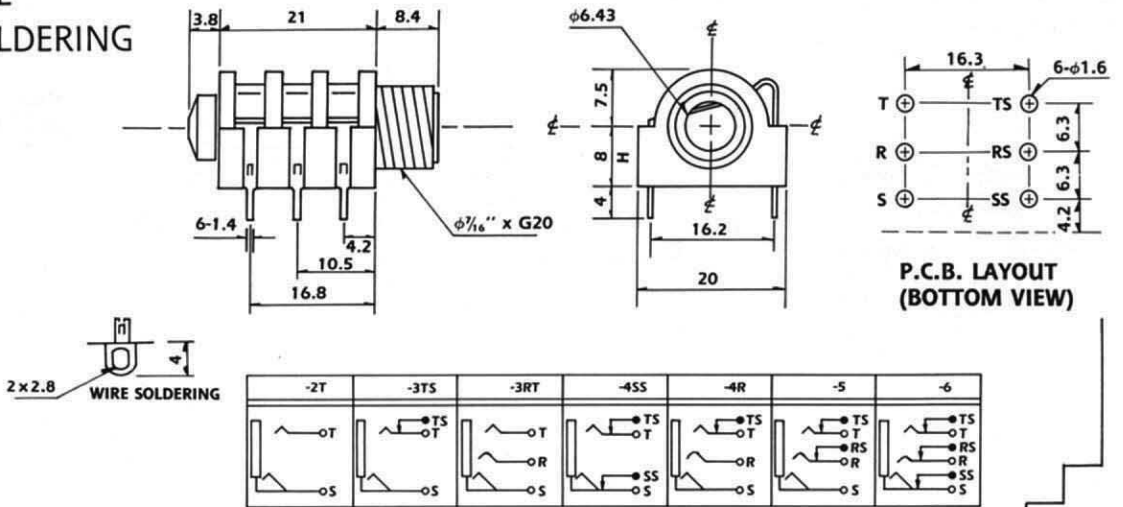


LJB0660A
 W/METAL RING

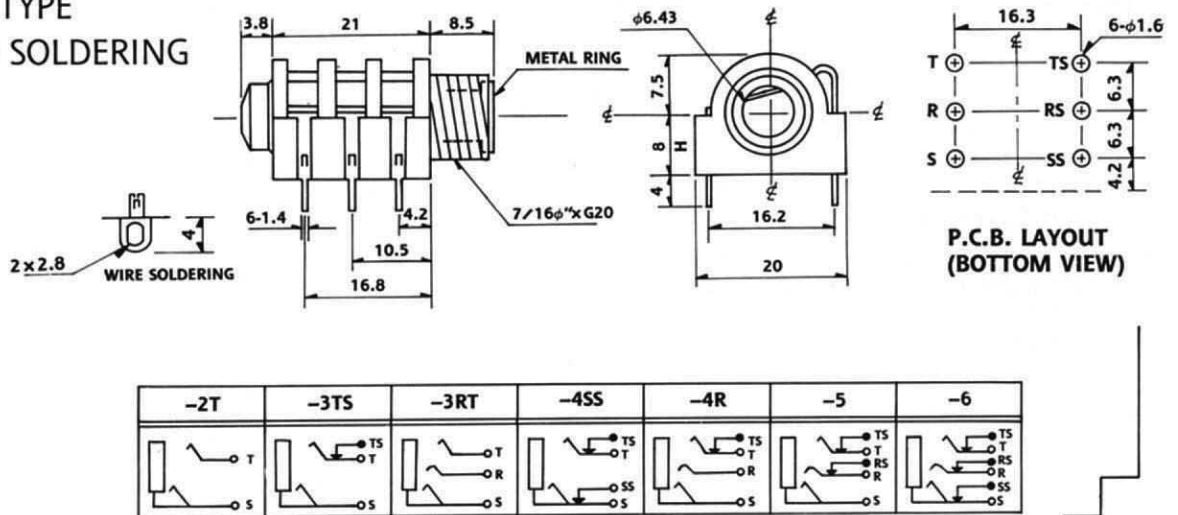
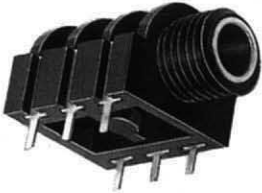


6.4φ HEADPHONE JACK

LJB0661 P.C.B. TYPE
LJB0661A WIRE SOLDERING



LJB0661B P.C.B. TYPE
LJB0661BA WIRE SOLDERING



LJB0664 P.C.B. TYPE
LJB0664A WIRE SOLDERING

