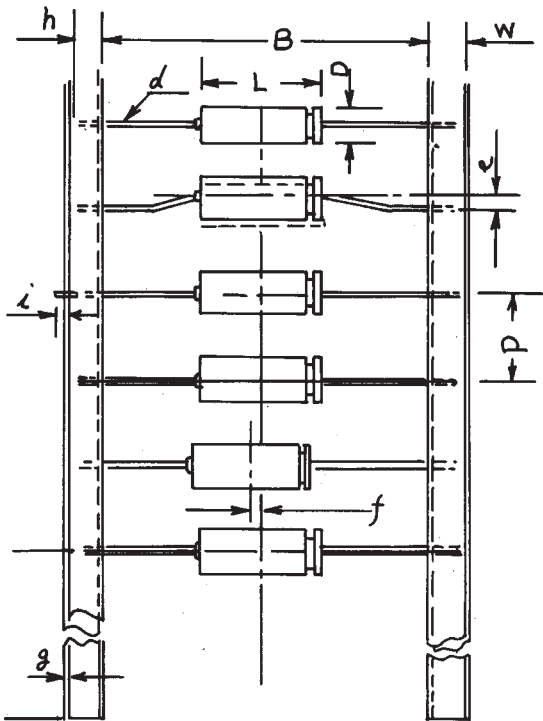




Axial Tape & Reel Specifications



DIMENSIONS: mm

| | | |
|---|-------------|------|
| D | (D+0.9) MAX | |
| L | (L+1.5) MAX | |
| d | 0.6 | |
| P | 10, 15 | ±0.5 |
| B | 56, 63, 73 | ±1.5 |
| W | 6.2 | ±0.5 |
| e | 1.2 MAX | |
| f | 1.0 MAX | |
| g | 0 | +0.8 |
| h | 3.2 MIN | |
| i | 1.5 MAX | |

- D Case Diameter
- L Case Length
- d Lead Wire Length
- p Component Spacing
- B Distance between Two Tapes (Internal Side)
- W Tape Width
- e Maximum Off Alignment
- f Individual Component Deviates from Center of Components Row.
- g Deviation of Tape Overlap
- h Lead Wire Overlapped by Tape
- i Lead Wire Length Extending Beyond Tape

NOTES:

- 1) The lead tape shall be applied to the top and bottom of each lead and shall extend a minimum of 30CM beyond the first and the last component of the reel.
- 2) For polarized capacitors, the "+" lead tape is red color and the "-" lead is white.
- 3) A maximum of 1 component may be missing, provide this gap is followed by at least 6 consecutive components.
 Sequenced assembly tapes shall have no missing components within the sequence order. A space of 1 component shall separated each sequence order.

PACKING & QUANTITY:

| CASE SIZE D X L | D ₀ | B ₀ | *W ₀ | (PCS) |
|--------------------|----------------|----------------|-----------------|-------|
| 6 x 12 | 330 | 72 | 60 | 1000 |
| 6 x 16 | 330 | 83 | 60 | 1000 |
| 8 x 16 | 330 | 83 | 60 | 800 |
| 8 x 20 | 330 | 93 | 80 | 800 |
| 10 x 20 | 330 | 83 | 80 | 400 |

*W₀: The width of paper interliner

